

Van Doorn Container Wheel Instruction Manual



VAN DOORN
container parts

Van Doorn Container Parts BV
v.Weerden Poelmanweg 19
3088 EA Rotterdam
Nederland
Tel. 0031 – 10 – 429 60 30
Fax. 0031 – 10 – 428 02 99
General E-mail: vandoorn@Ccontainerparts.nl
Sales email : Sales@Ccontainerparts.nl

Van Doorn Container Wheel Instruction Manual



Step 1:

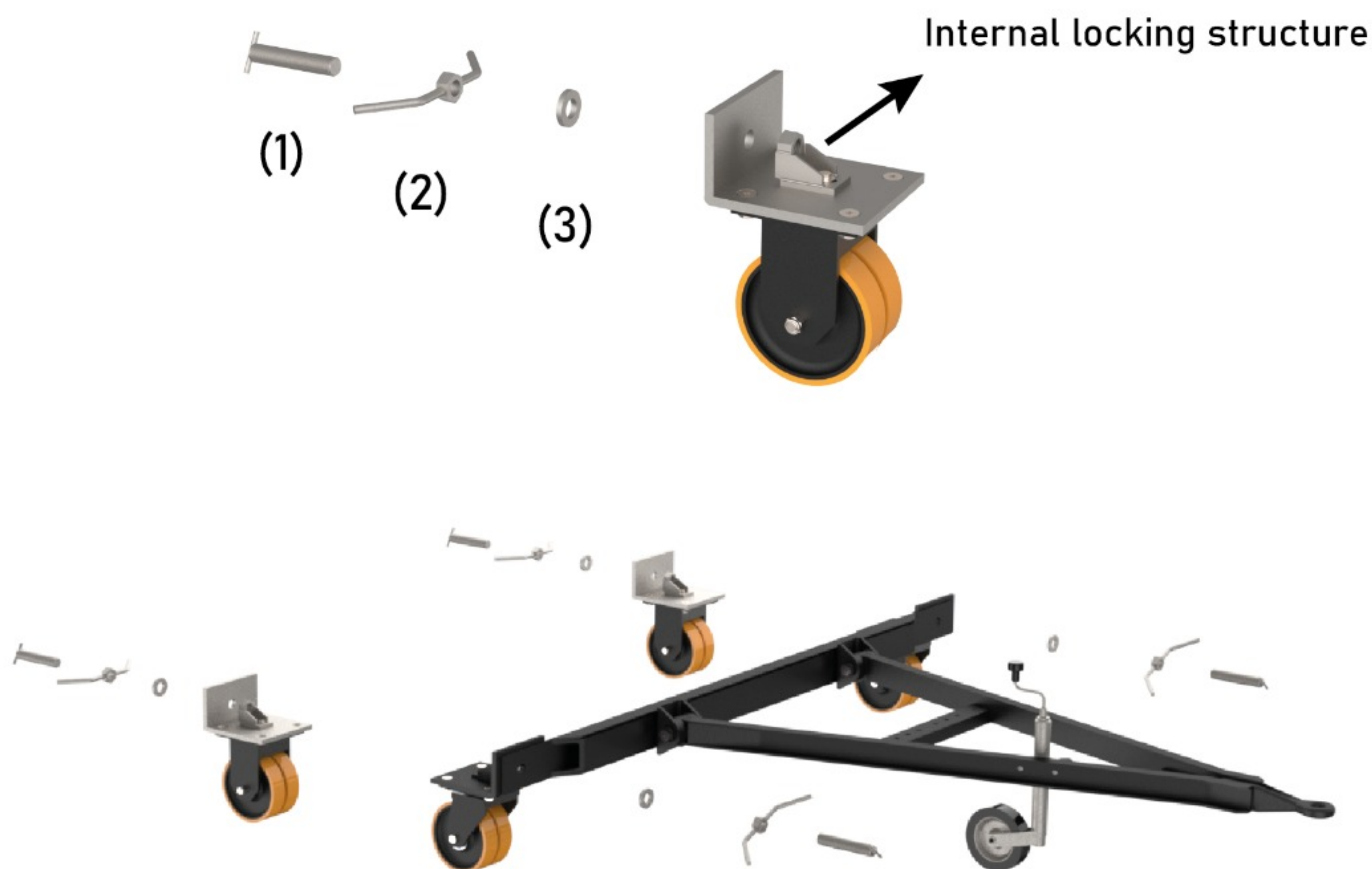
Attach the triangular structure to the main structure of the container wheel set. Install the bolts as indicated for good and firm connection and lubrication purposes.



VAN DOORN
container parts

Van Doorn Container Parts BV
v.Weerden Poelmanweg 19
3088 EA Rotterdam
Nederland
Tel. 0031 - 10 - 429 60 30
Fax. 0031 - 10 - 428 02 99
General E-mail: vandoorn@Ccontainerparts.nl
Sales email : Sales@Ccontainerparts.nl

Van Doorn Container Wheel Instruction Manual



Step 2:

Unscrew the long thread (1), nut (2) and ring (3) on each mounting plate & make sure that the internal locking structure can fit easily in the ISO hole of each bottom cornercasting of the container.

Van Doorn Container Wheel Instruction Manual



Step 3:

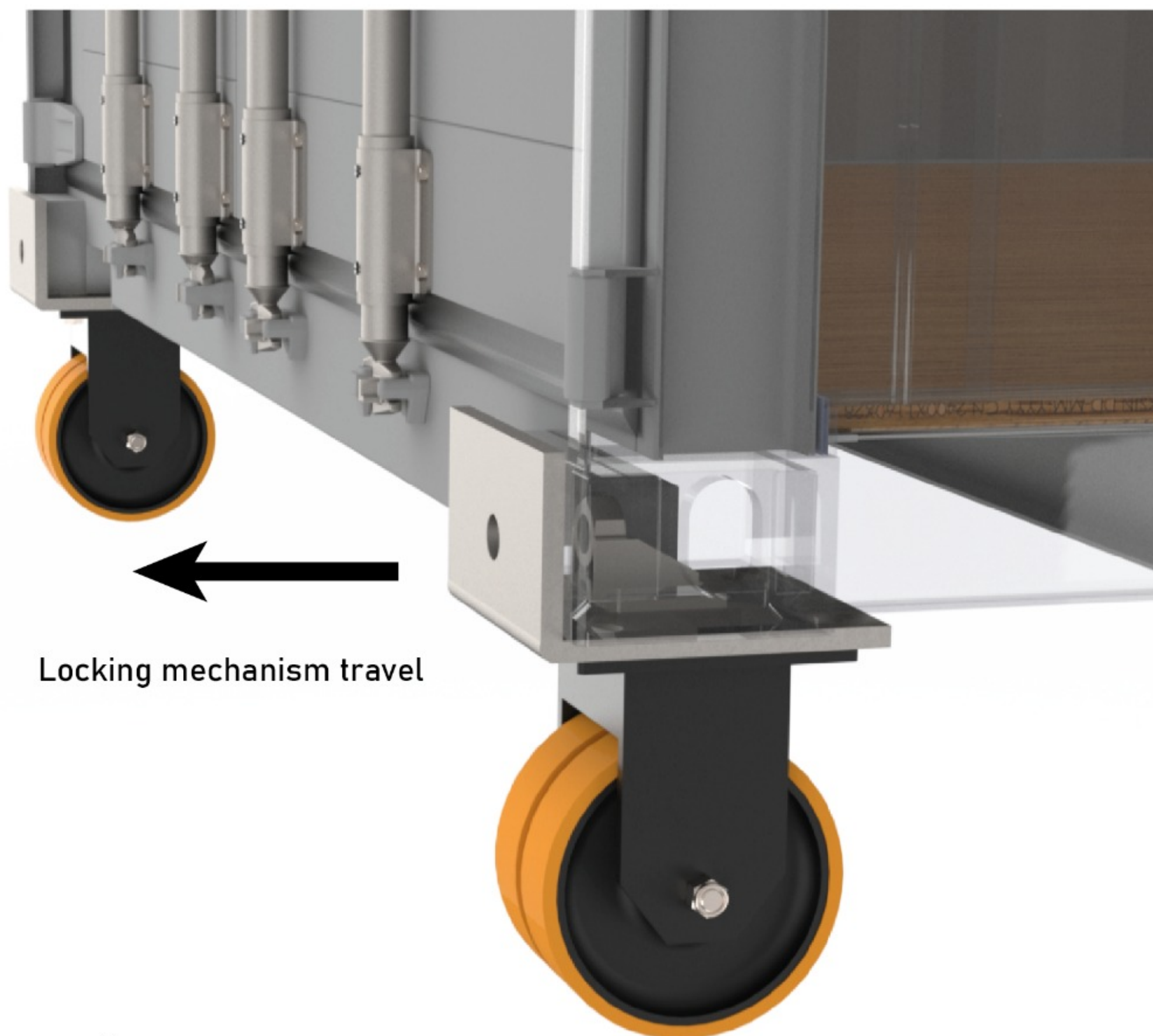
Lift the container with a forklift truck or container spreader up to a maximum of 500mm above the ground. Make sure that the front and back side are free of any obstacle and the wheels can be mounted easily. Be aware, that from this point nothing is allowed to be located underneath the container and every safety measure is taken into account.



VAN DOORN
container parts

Van Doorn Container Parts BV
v.Weerden Poelmanweg 19
3088 EA Rotterdam
Nederland
Tel. 0031 – 10 – 429 60 30
Fax. 0031 – 10 – 428 02 99
General E-mail: vandoorn@Ccontainerparts.nl
Sales email : Sales@Ccontainerparts.nl

Van Doorn Container Wheel Instruction Manual



Step 4:

Assemble the separate wheels on the container. Make sure that the internal locking structure can move freely and no obstacle is located in the direction of the locking mechanism travel.

Van Doorn Container Wheel Instruction Manual



Step 5:

When the mounting plate connects with the cornercasting, align the long thread, nut and ring with the internal locking mechanism through the front side of the mounting plate and the cornercasting. As the long thread aligns properly with the internal locking mechanism, the internal locking mechanism can be tightened and finally secured with the large wingnut. Follow the same assemble procedure for the second separate wheel



VAN DOORN
container parts

Van Doorn Container Parts BV
v.Weerden Poelmanweg 19
3088 EA Rotterdam
Nederland
Tel. 0031 – 10 – 429 60 30
Fax. 0031 – 10 – 428 02 99
General E-mail: vandoorn@Ccontainerparts.nl
Sales email : Sales@Ccontainerparts.nl

Van Doorn Container Wheel Instruction Manual



Step 6:

Follow the same procedure of step 5 for the locking mechanism on the front side with the triangle.

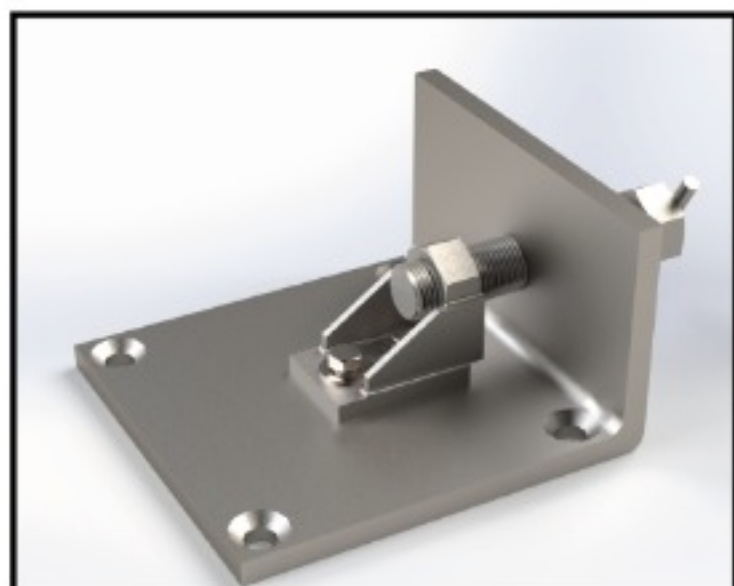


VAN DOORN
container parts

Van Doorn Container Parts BV
v.Weerden Poelmanweg 19
3088 EA Rotterdam
Nederland
Tel. 0031 – 10 – 429 60 30
Fax. 0031 – 10 – 428 02 99
General E-mail: vandoorn@Ccontainerparts.nl
Sales email : Sales@Ccontainerparts.nl

Van Doorn Container Wheel Instruction Manual

Maintenance flow chart



Check the mounting plate for cracks



Frequently lubricate the elbow joint through the grease nipple

Description:	Article Nr:	Mounting plate dimension	P.C.D.	Wheel Capacity
	9010000270	230x247,5mm	160mm	2.2 T <input type="checkbox"/>
	On request	260x277,5mm	190mm	2.8 T <input type="checkbox"/>
	On request	275x200mm	250mm	6 T <input type="checkbox"/>
	9010000243	230x247,5mm	160mm	2.2 T <input type="checkbox"/>
	9010000245	260x277,5mm	190mm	2.8 T <input type="checkbox"/>
	On request	275x200mm	250mm	6 T <input type="checkbox"/>
	9010000242	230x247,5mm	160mm	2.2 T <input type="checkbox"/>
	9010000244	260x277,5mm	190mm	2.8 T <input type="checkbox"/>
	On request	275x200mm	250mm	6 T <input type="checkbox"/>
	9010000233	-	160mm <input type="checkbox"/>	2.2 T <input type="checkbox"/>
	9010000237	-	190mm <input type="checkbox"/>	2.8 T <input type="checkbox"/>
	9010000235	-	250mm <input type="checkbox"/>	6 T <input type="checkbox"/>
	9010000232	-	160mm <input type="checkbox"/>	2.2 T <input type="checkbox"/>
	9010000236	-	190mm <input type="checkbox"/>	2.8 T <input type="checkbox"/>
	9010000234	-	250mm <input type="checkbox"/>	6 T <input type="checkbox"/>



VAN DOORN
container parts

Van Doorn Container Parts BV
v.Weerden Poelmanweg 19
3088 EA Rotterdam
Nederland
Tel. 0031 - 10 - 429 60 30
Fax. 0031 - 10 - 428 02 99
General E-mail: vandoorn@Ccontainerparts.nl
Sales email : Sales@Ccontainerparts.nl



Van Doorn

Container Parts

Container Wheel

Instruction Manual

Sales
&
Rental
&
Spare Parts



Van Doorn Container Parts BV
v.Weerden Poelmanweg 19
3088 EA Rotterdam
Nederland

Tel. 0031 – 10 – 429 60 30
Fax. 0031 – 10 – 428 02 99

E-mail:
vandoorn@Ccontainerparts.nl
Sales@Ccontainerparts.nl