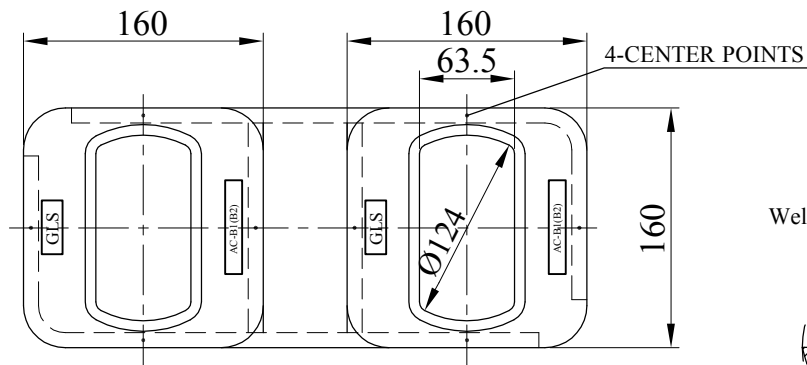
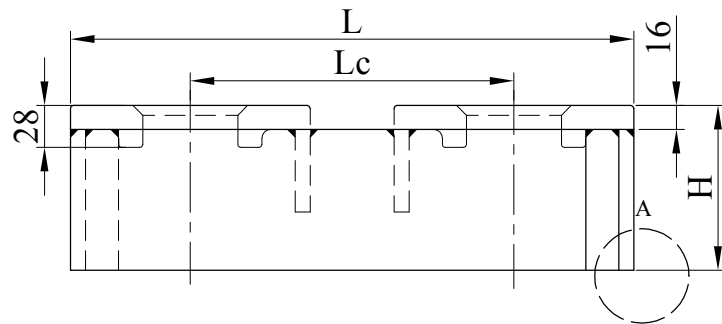
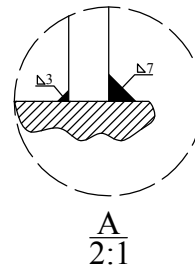


DOUBLE RAISED FOUNDATION

AC-B2/D



Welding recommendation



TYPE	Lc	L	H	Weight
AC-B2/D/203/110	203	363	110	12.4 KG
AC-B2/D/216/110	216	376	110	12.6 KG
AC-B2/D/258/110	258	418	110	13.3 KG
Other height(H) according to orders				

LOADS	SHEAR [KN]	TENSION [KN]
BREAKING LOAD	420	500
SAFE WORKING LOAD	210	250